



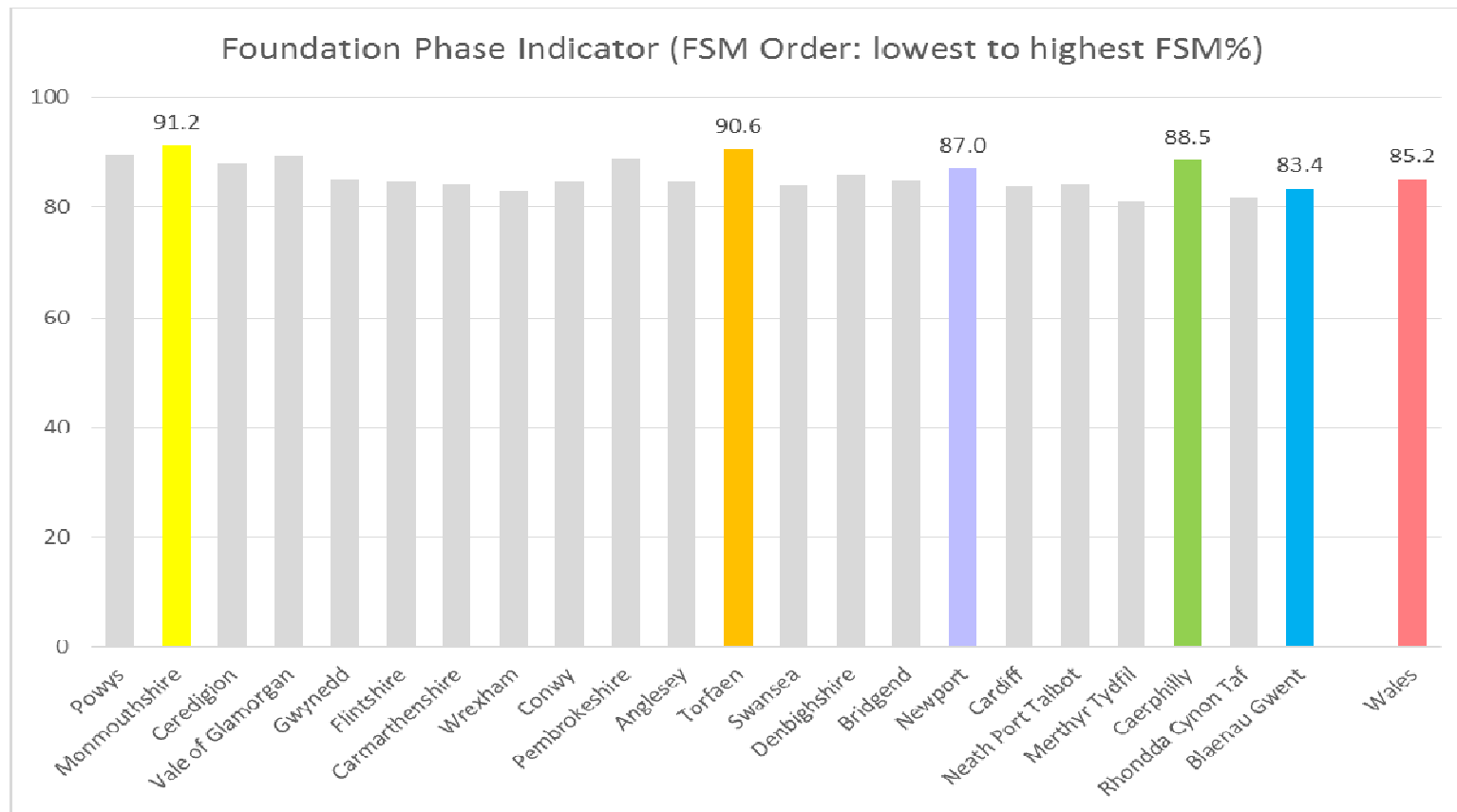
EAS

Education Achievement Service
for South East Wales
Gwasanaeth Cyflawni Addysg
i Dde Ddwyrain Cymru

Caerphilly Pupil Performance 2013/14

Foundation Phase

- Performance in the Foundation Phase continues to be above the Wales average for all indicators with 88.5% of pupils achieving the Foundation Phase indicator in 2014, an increase from 85.0% in 2013.
- Caerphilly currently ranks 6th in Wales when compared with other local authorities, which is well above Caerphilly's FSM ranking



Foundation Phase - expected Outcome 5+



- Performance improved in all indicators.
- The rate of improvement was at a faster rate than for Wales overall in all indicators except LLC-Welsh.

Outcome 5+	FPI		LLC English		LLC Welsh		Mathematical Development		PSDWCD	
	2014	2013 +/-	2014	2013 +/-	2014	2013 +/-	2014	2013 +/-	2014	2013 +/-
Caerphilly	88.3	3.5	90.1	3.2	92.3	1.6	91.1	1.7	95.4	1.6
Wales	85.2	2.2	86.6	1.4	89.9	3.1	88.7	1.3	94.2	1.2

Foundation Phase LA rankings

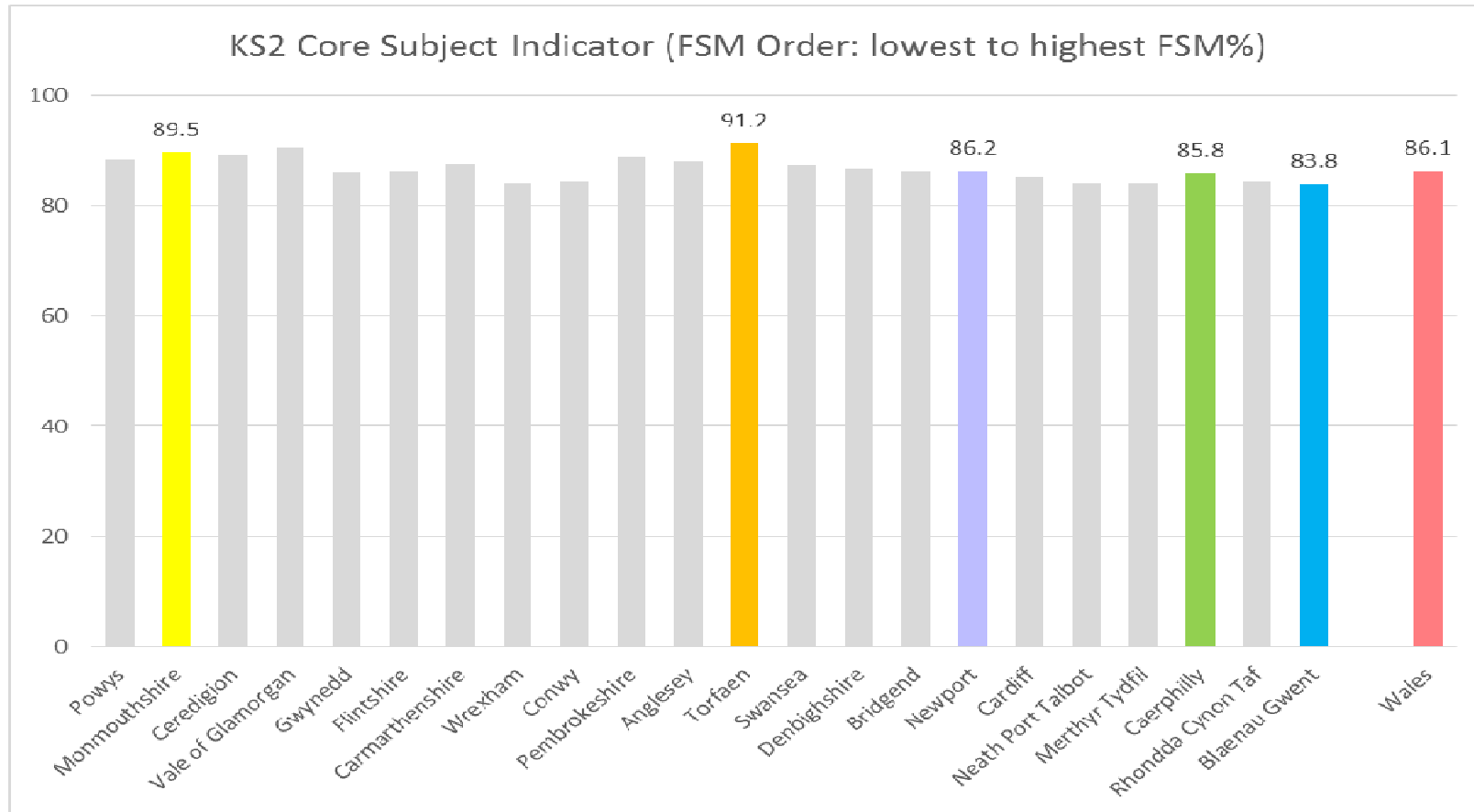
Caerphilly performance is above the Welsh average for all indicators

- FPI 6th
- LLC-English 5th
- LLC-Welsh 4th
- MD 6th
- PSDWCD 8th

FPI			LLC English			LLC Welsh			Mathematical Development			PSDWCD		
1	Monmouthshire	91.2	1	Monmouthshire	93.4	1	Vale of Glamorgan	97.1	1	Monmouthshire	93.3	1	Monmouthshire	97.2
2	Torfaen	90.6	2	Torfaen	93.0	2	Monmouthshire	96.1	2	Torfaen	93.2	2	Vale of Glamorgan	96.4
3	Powys	89.6	3	Powys	91.0	3	Merthyr Tydfil	92.5	3	Vale of Glamorgan	92.4	3	Torfaen	96.3
4	Vale of Glamorgan	89.5	4	Vale of Glamorgan	90.9	4	Caerphilly	92.3	4	Pembrokeshire	91.6	4	Powys	96.2
5	Pembrokeshire	88.7	5	Caerphilly	90.0	5	Pembrokeshire	91.8	5	Powys	91.3	5	Ceredigion	95.9
6	Caerphilly	88.5	6	Pembrokeshire	89.4	6	Neath Port Talbot	91.8	6	Caerphilly	91.1	6	Pembrokeshire	95.7
7	Ceredigion	87.9	7	Newport	89.4	7	Powys	91.6	7	Denbighshire	90.6	7	Fintshire	95.5
8	Newport	87.0	8	Ceredigion	88.1	8	Bridgend	91.4	8	Ceredigion	90.5	8	Caerphilly	95.4
9	Denbighshire	86.1	9	Denbighshire	87.4	9	Newport	91.1	9	Newport	90.0	9	Denbighshire	95.3
10	Gwynedd	85.2	10	Fintshire	87.4	10	Ceredigion	90.6	10	Gwynedd	89.7	10	Conwy	95.2
11	Wales	85.2	11	Bridgend	87.2	11	Cardiff	90.5	11	Conwy	89.7	11	Bridgend	94.4
12	Bridgend	85.1	12	Wales	86.6	12	Rhondda Cynon Taf	90.1	12	Wales	88.7	12	Anglesey	94.3
13	Anglesey	84.6	13	Anglesey	86.6	13	Wales	89.8	13	Fintshire	88.6	13	Neath Port Talbot	94.3
14	Conwy	84.5	14	Conwy	86.3	14	Gwynedd	89.4	14	Bridgend	88.3	14	Blaenau Gwent	94.3
15	Fintshire	84.5	15	Blaenau Gwent	85.8	15	Denbighshire	89.3	15	Anglesey	88.2	15	Wales	94.2
16	Neath Port Talbot	84.2	16	Wrexham	85.6	16	Cardiff	89.2	16	Cardiff	88.1	16	Swansea	94.1
17	Cardiff	84.1	17	Swansea	85.5	17	Swansea	89.0	17	Wrexham	87.7	17	Cardiff	94.0
18	Swansea	83.9	18	Cardiff	85.2	18	Torfaen	88.1	18	Neath Port Talbot	87.6	18	Newport	93.6
19	Cardiff	83.7	19	Neath Port Talbot	84.2	19	Anglesey	88.1	19	Cardiff	87.4	19	Cardiff	93.5
20	Blaenau Gwent	83.4	20	Rhondda Cynon Taf	82.9	20	Fintshire	87.3	20	Swansea	87.1	20	Gwynedd	93.4
21	Wrexham	82.9	21	Merthyr Tydfil	82.4	21	Conwy	86.3	21	Blaenau Gwent	86.5	21	Wrexham	93.2
22	Rhondda Cynon Taf	81.8	22	Cardiff	81.1	22	Wrexham	85.7	22	Rhondda Cynon Taf	86.1	22	Rhondda Cynon Taf	92.0
23	Merthyr Tydfil	81.2				23	Blaenau Gwent	75.7	23	Merthyr Tydfil	85.3	23	Merthyr Tydfil	91.8

Key Stage 2

- Performance in key stage 2 continues to be higher than expected given a FSM ranking of 21st for all core subjects at level 4 and above with Caerphilly ranking remaining 15th in Wales for the CSI in 2013
- The percentage achieving the CSI remains slightly below the national average



Key Stage 2 – Expected Level 4+



- Performance improved in all indicators
- The rate of improvement was at a faster rate than for Wales overall in mathematics and science, a slightly slower rate in the CSI and English
- Performance in Welsh First Language was at a slower rate than Wales, but performance remains above the Wales average

Level 4+	CSI		Cymraeg		English		Mathematics		Science	
	2014	2013 +/-	2014	2013 +/-	2014	2013 +/-	2014	2013 +/-	2014	2013 +/-
Caerphilly	85.8	1.5	90.0	0.3	88.0	1.1	89.0	2.7	90.4	1.0
Wales	86.1	1.8	88.1	1.4	88.4	1.3	88.9	1.2	90.3	0.4

Key Stage 2

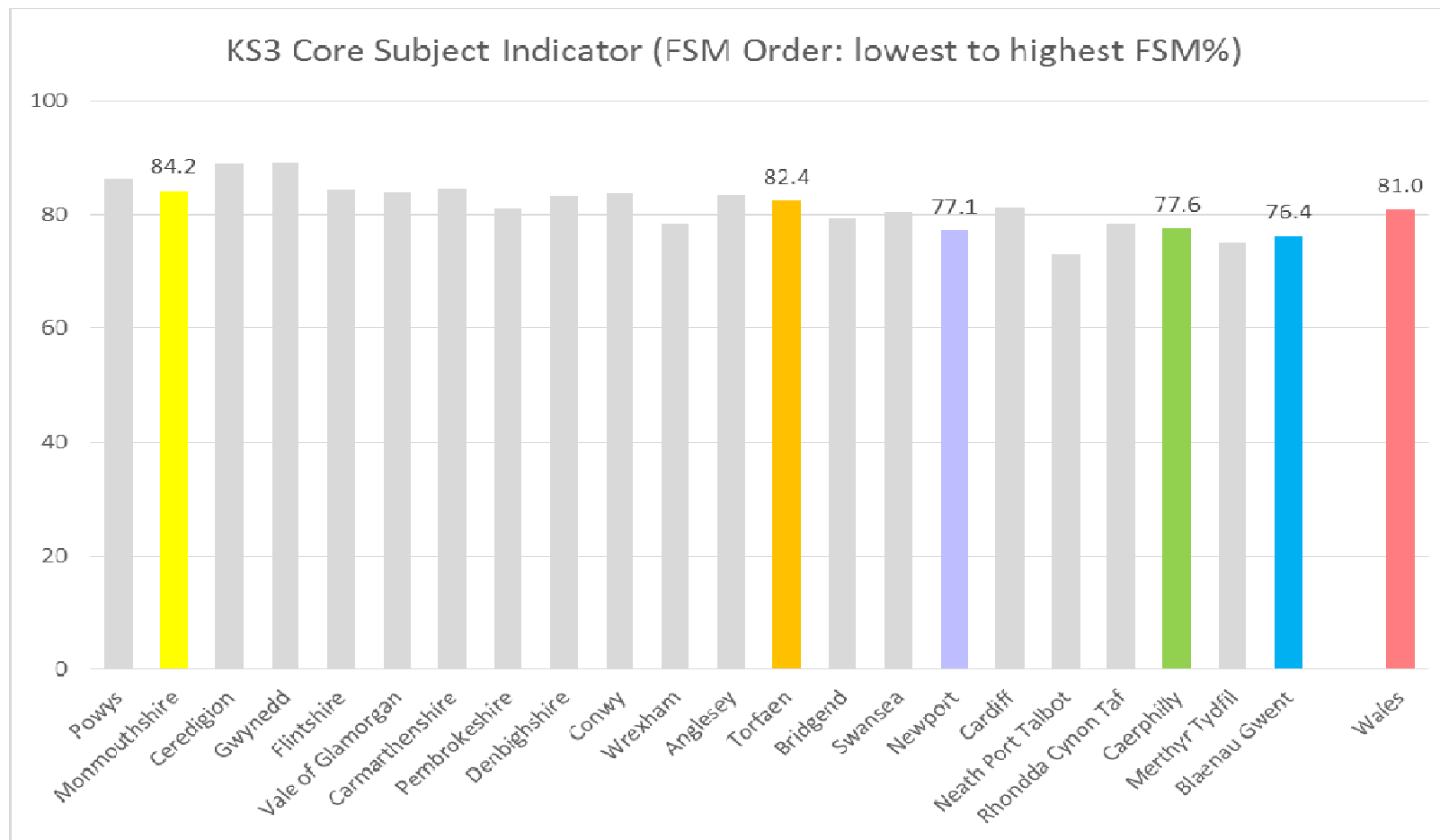
Caerphilly's performance is above the Wales average for Welsh first language and Mathematics and science, but slightly lower for English and the CSI

- CSI 15th
- English 15th
- Welsh 10th
- Maths 11th
- Science 13th

CSI			English			Welsh (first language)			Mathematics			Science		
1	Torfaen	91.2	1	Torfaen	92.4	1	Merthyr Tydfil	96.9	1	Torfaen	94.3	1	Torfaen	94.5
2	Vale of Glamorgan	90.5	2	Vale of Glamorgan	92.2	2	Vale of Glamorgan	95.9	2	Vale of Glamorgan	93.0	2	Vale of Glamorgan	94.2
3	Monmouthshire	89.5	3	Ceredigion	91.2	3	Newport	94.3	3	Ceredigion	92.3	3	Monmouthshire	93.9
4	Ceredigion	89.1	4	Monmouthshire	90.8	4	Powys	92.9	4	Monmouthshire	91.4	4	Ceredigion	93.6
5	Pembrokeshire	88.7	5	Pembrokeshire	90.7	5	Torfaen	92.0	5	Pembrokeshire	90.9	5	Pembrokeshire	93.2
6	Powys	88.3	6	Powys	90.3	6	Bridgend	90.5	6	Powys	90.3	6	Newport	92.2
7	Anglesey	87.8	7	Carmarthenshire	90.0	7	Wrexham	90.4	7	Swansea	89.8	7	Powys	92.1
8	Carmarthenshire	87.4	8	Newport	89.6	8	Cardiff	90.1	8	Carmarthenshire	89.7	8	Gwynedd	91.3
9	Swansea	87.3	9	Anglesey	89.5	9	Flintshire	90.0	9	Denbighshire	89.5	9	Carmarthenshire	91.1
10	Denbighshire	86.6	10	Denbighshire	89.2	10	Caerphilly	89.9	10	Anglesey	89.2	10	Denbighshire	90.9
11	Newport	86.2	11	Gwynedd	89.2	11	Swansea	89.5	11	Caerphilly	89.0	11	Swansea	90.8
12	Bridgend	86.2	12	Flintshire	89.0	12	Ceredigion	88.8	12	Wales	88.9	12	Anglesey	90.6
13	Flintshire	86.1	13	Swansea	88.8	13	Conwy	88.5	13	Newport	88.8	13	Caerphilly	90.4
14	Wales	86.1	14	Bridgend	88.7	14	Rhondda Cynon Taf	88.4	14	Bridgend	88.8	14	Wales	90.3
15	Gwynedd	86.0	15	Wales	88.4	15	Gwynedd	88.3	15	Gwynedd	88.6	15	Bridgend	90.3
16	Caerphilly	85.8	16	Caerphilly	88.0	16	Wales	88.1	16	Flintshire	88.4	16	Blaenau Gwent	89.6
17	Cardiff	85.1	17	Cardiff	87.3	17	Blaenau Gwent	88.0	17	Blaenau Gwent	88.4	17	Flintshire	89.4
18	Conwy	84.3	18	Cardiff	87.3	18	Neath Port Talbot	87.7	18	Wrexham	87.7	18	Conwy	89.3
19	Rhondda Cynon Taf	84.3	19	Wrexham	87.2	19	Pembrokeshire	87.6	19	Cardiff	87.7	19	Cardiff	89.0
20	Wrexham	84.2	20	Rhondda Cynon Taf	86.7	20	Denbighshire	85.1	20	Conwy	87.7	20	Rhondda Cynon Taf	88.8
21	Merthyr Tydfil	84.2	21	Merthyr Tydfil	86.3	21	Carmarthenshire	84.4	21	Rhondda Cynon Taf	87.6	21	Wrexham	88.4
22	Neath Port Talbot	84.1	22	Neath Port Talbot	86.3	22	Anglesey	83.4	22	Neath Port Talbot	86.9	22	Neath Port Talbot	87.6
23	Blaenau Gwent	83.8	23	Blaenau Gwent	85.8	23	Monmouthshire	82.9	23	Merthyr Tydfil	86.2	23	Merthyr Tydfil	86.9

Key Stage 3

- Performance in key stage 3 continues to be stronger than expected in all core subjects at level 5 and above with Caerphilly ranking 18th in Wales for the CSI at 73.5% in 2013 (an improvement from 68.4% in 2012).



Key Stage 3 – Expected Level (5+)



- All core subjects improved in 2014, with the greatest improvement in English.
- The rate of improvement was faster than that of Wales as a whole in English and science, but slower in Welsh first language and mathematics

Level 5+	CSI		Cymraeg		English		Mathematics		Science	
	2014	2013 +/-	2014	2013 +/-	2014	2013 +/-	2014	2013 +/-	2014	2013 +/-
Caerphilly	77.6	3.1	89.5	1.4	82.2	3.5	83.9	2.4	88.8	5.0
Wales	81.0	4.0	90.1	3.5	85.9	3.0	86.5	3.4	90.4	3.4

Key Stage 3

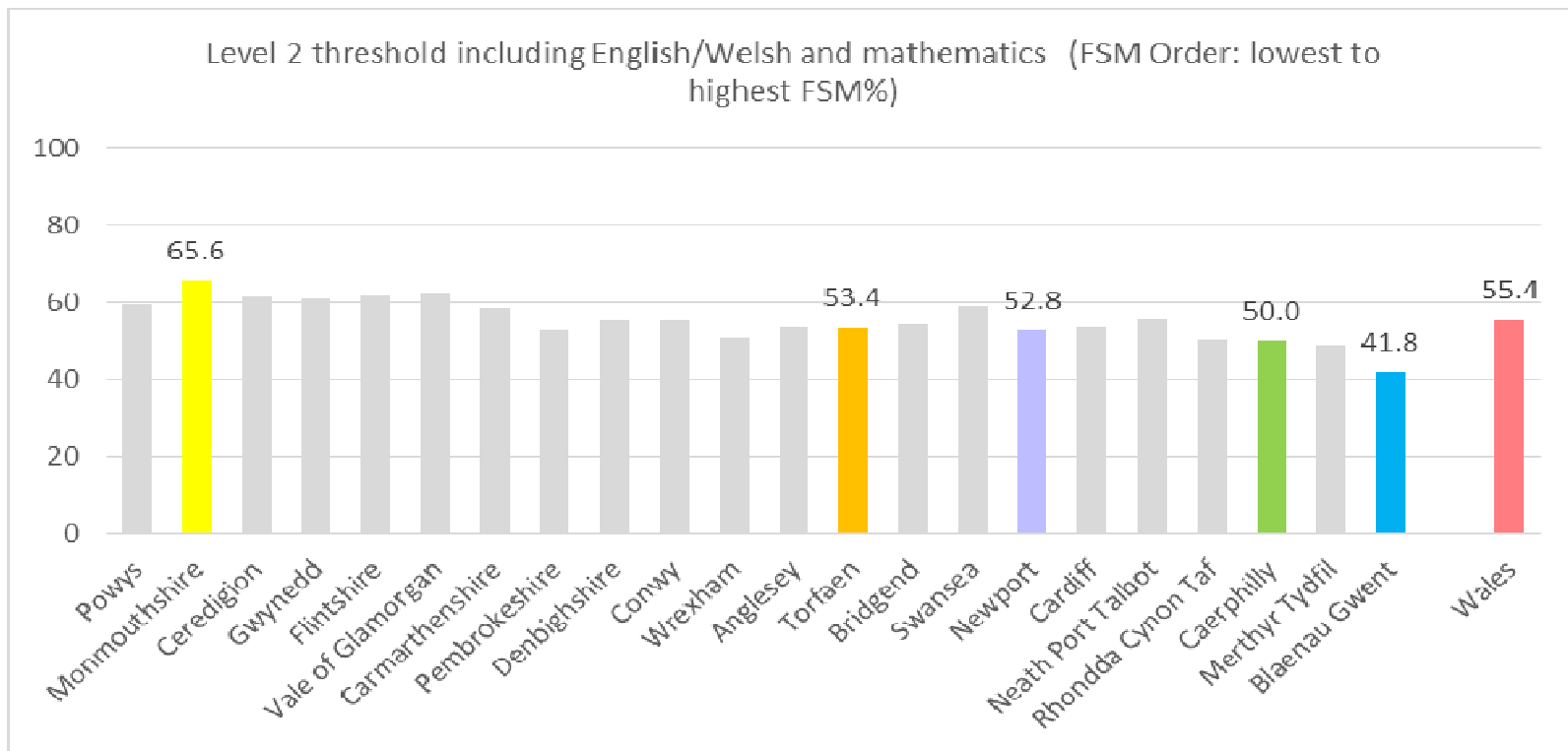
Caerphilly's performance is below the Wales average for all indicators, but the ranking positions are slightly above the expectation of 20th

- *CSI 18th,*
- *Cymraeg 11th*
- *English 20th*
- *Maths 19th*
- *Science 17th*

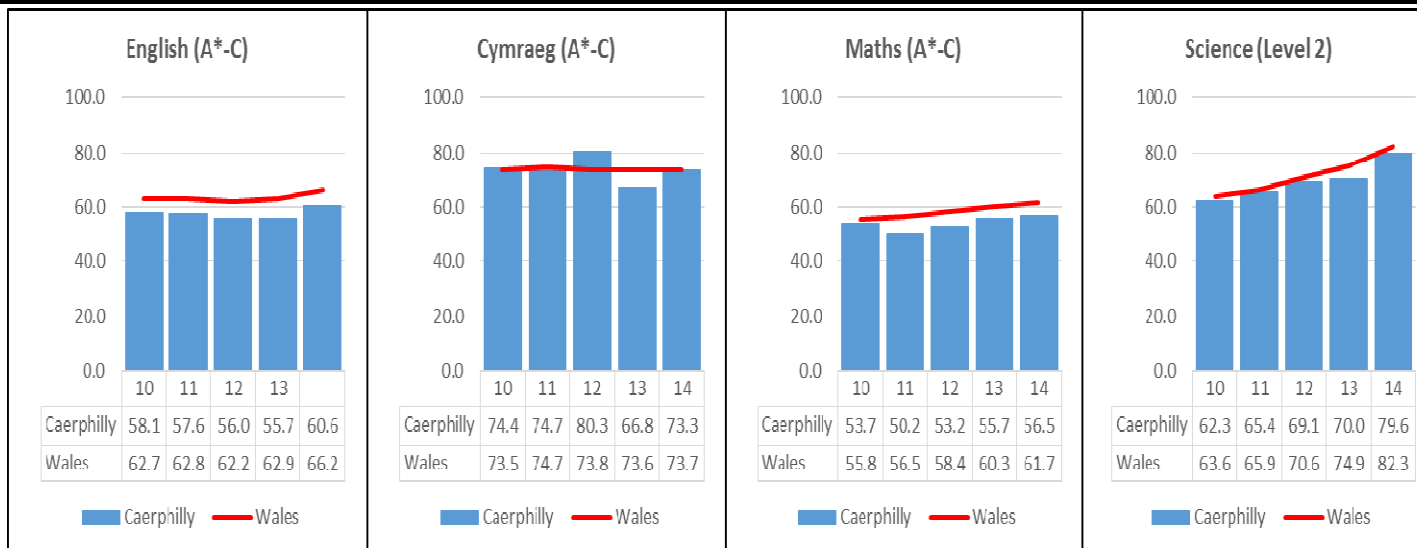
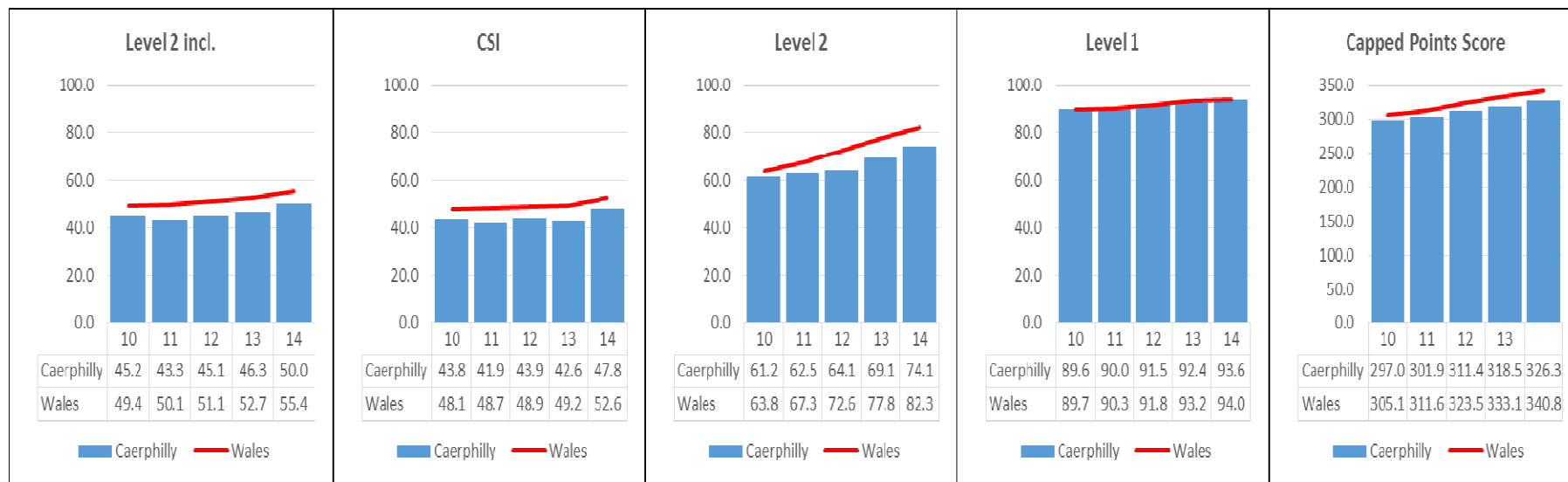
CSI			English			Welsh (first language)			Mathematics			Science		
1	Gwynedd	89.1	1	Gwynedd	90.6	1	Pembrokeshire	95.3	1	Gwynedd	91.9	1	Powys	94.4
2	Ceredigion	89.0	2	Ceredigion	90.5	2	Powys	94.2	2	Ceredigion	91.5	2	Gwynedd	93.9
3	Powys	86.5	3	Powys	90.3	3	Cardiff	94.0	3	Powys	89.8	3	Conwy	93.7
4	Cardiganshire	84.5	4	Flintshire	89.4	4	Conwy	92.0	4	Conwy	89.1	4	Ceredigion	93.5
5	Flintshire	84.3	5	Monmouthshire	89.2	5	Wrexham	91.7	5	Vale of Glamorgan	89.0	5	Denbighshire	93.5
6	Monmouthshire	84.2	6	Vale of Glamorgan	88.7	6	Gwynedd	91.6	6	Denbighshire	88.8	6	Monmouthshire	93.0
7	Vale of Glamorgan	84.0	7	Conwy	88.7	7	Denbighshire	91.6	7	Flintshire	88.7	7	Vale of Glamorgan	92.6
8	Conwy	83.7	8	Cardiganshire	88.5	8	Wales	90.1	8	Cardiganshire	88.4	7	Torfaen	92.6
9	Anglesey	83.6	9	Denbighshire	88.5	8	Rhondda Cynon Taf	90.0	9	Monmouthshire	87.7	9	Flintshire	91.3
10	Denbighshire	83.2	10	Torfaen	88.1	9	Swansea	89.9	9	Cardiff	87.7	10	Anglesey	91.3
11	Torfaen	82.4	11	Anglesey	87.9	10	Ceredigion	89.8	9	Torfaen	87.7	11	Pembrokeshire	91.2
12	Cardiff	81.5	12	Cardiff	86.0	11	Caerphilly	89.5	12	Pembrokeshire	87.4	12	Cardiganshire	91.1
13	Pembrokeshire	81.1	13	Wales	85.9	12	Anglesey	89.2	13	Anglesey	87.1	13	Cardiff	90.7
14	Swansea	80.6	13	Pembrokeshire	85.8	13	Bridgend	89.1	13	Swansea	86.9	13	Wales	90.4
15	Bridgend	79.3	14	Swansea	85.1	14	Cardiganshire	88.7	14	Wales	86.5	14	Bridgend	90.3
16	Wrexham	78.4	15	Bridgend	85.1	15	Vale of Glamorgan	88.3	15	Wrexham	84.7	15	Swansea	89.8
17	Rhondda Cynon Taf	78.4	16	Wrexham	84.6	16	Torfaen	87.4	16	Bridgend	84.5	16	Wrexham	89.2
18	Caerphilly	77.6	17	Newport	83.7	17	Neath Port Talbot	86.0	17	Rhondda Cynon Taf	84.3	17	Caerphilly	88.8
19	Newport	77.1	18	Rhondda Cynon Taf	83.3	18	Flintshire	56.0	18	Newport	84.0	18	Rhondda Cynon Taf	88.7
20	Blaenau Gwent	76.4	19	Blaenau Gwent	82.7				19	Caerphilly	83.9	19	Blaenau Gwent	88.7
21	Merthyr Tydfil	75.1	20	Caerphilly	82.2				20	Merthyr Tydfil	83.0	20	Newport	87.6
22	Neath Port Talbot	73.1	21	Merthyr Tydfil	81.0				21	Blaenau Gwent	80.5	21	Merthyr Tydfil	85.0
			22	Neath Port Talbot	80.6				22	Neath Port Talbot	79.9	22	Neath Port Talbot	84.3

Key Stage 4

- Key stage 4 results indicate continued progress in 2014 with increases in all indicators
- The proportion of pupils achieving the Level 2 threshold inclusive of English/Welsh first language and mathematics has improved from 46.3% in 2013 to 50.0% in 2014. This places Caerphilly 20th in Wales for this indicator.



Key Stage 4 – All indicators (5 years)



Key Stage 4 Indicators

Caerphilly's performance is below the Wales average for all indicators, but the ranking positions are slightly in line with expectation of 20th

- L2+ 20th
- L2 20th
- L1 16th
- CSI 19th
- CPS 21st

Level 2 threshold and highest and maths			Level 2		Level 1		CSI		Capped Point Score					
1	Monmouthshire	65.6	1	Neath Port Talbot	89.4	1	Gwynedd	97.2	1	Monmouthshire	60.9	1	Gwynedd	382
2	Vale of Glamorgan	62.2	2	Denbighshire	88.8	2	Ceredigion	97.1	2	Gwynedd	63.8	2	Ceredigion	380
3	Flintshire	61.9	3	Ceredigion	88.7	3	Neath Port Talbot	96.8	3	Vale of Glamorgan	63.7	3	Anglesey	380
4	Ceredigion	61.4	4	Gwynedd	87.7	4	Powys	96.4	4	Ceredigion	63.6	4	Cardiff	380
5	Gwynedd	61.1	5	Monmouthshire	87.4	5	Monmouthshire	96.4	5	Flintshire	63.5	5	Denbighshire	380
6	Powys	59.8	6	Vale of Glamorgan	87.0	6	Anglesey	96.0	6	Powys	63.2	6	Powys	380
7	Swansea	59.7	7	Powys	86.8	7	Cardiff	95.7	7	Cardiff	63.2	7	Cardiff	380
8	Cardiff	58.7	8	Cardiff	86.8	8	Cardiff	95.6	8	Swansea	63.0	8	Swansea	380
9	Neath Port Talbot	58.6	9	Anglesey	86.8	9	Swansea	95.6	9	Brockton	63.0	9	Brockton	380
10	Denbighshire	58.6	10	Swansea	86.4	10	Merthyr Tydfil	95.4	10	Denbighshire	63.0	10	Swansea	380
11	Cardiff	58.6	11	Cardiff	84.7	11	Denbighshire	95.2	11	Neath Port Talbot	63.0	11	Cardiff	380
12	Wales	55.4	12	Rhondda Cynon Taf	84.6	12	Torfaen	95.2	12	Cardiff	62.7	12	Cardiff	380
13	Brockton	54.8	13	Newport	83.6	13	Pembrokeshire	94.8	13	Wales	52.6	13	Anglesey	380
14	Cardiff	54.0	14	Pembrokeshire	83.7	14	Flintshire	94.7	14	Torfaen	52.2	14	Torfaen	380
15	Torfaen	53.4	15	Wales	82.3	15	Vale of Glamorgan	94.0	15	Newport	51.4	15	Newport	380
16	Pembrokeshire	53.2	16	Torfaen	82.3	16	Caerphilly	93.6	16	Cardiff	51.2	16	Torfaen	380
17	Newport	52.8	17	Merthyr Tydfil	82.0	17	Brockton	93.4	17	Pembrokeshire	49.7	17	Rhondda Cynon Taf	380
18	Anglesey	52.8	18	Brockton	79.8	18	Newport	93.4	18	Rhondda Cynon Taf	46.7	18	Brockton	380
19	Rhondda Cynon Taf	52.5	19	Cardiff	78.0	19	Cardiff	93.2	19	Caerphilly	47.8	19	Cardiff	380
20	Caerphilly	50.0	20	Caerphilly	74.1	20	Rhondda Cynon Taf	93.2	20	Anglesey	47.8	20	Anglesey	380
21	Merthyr Tydfil	46.9	21	Anglesey	73.9	21	Anglesey	93.1	21	Merthyr Tydfil	46.7	21	Caerphilly	326
22	Blaenau Gwent	41.8	22	Blaenau Gwent	73.3	22	Blaenau Gwent	90.0	22	Blaenau Gwent	38.6	22	Blaenau Gwent	316

Key Stage 4 Core Subjects

Caerphilly's performance is below the Wales average for all indicators, but the ranking positions are in line with or above expectation of 20th

- *English* 20th
- *Maths* 19th
- *Science* 16th

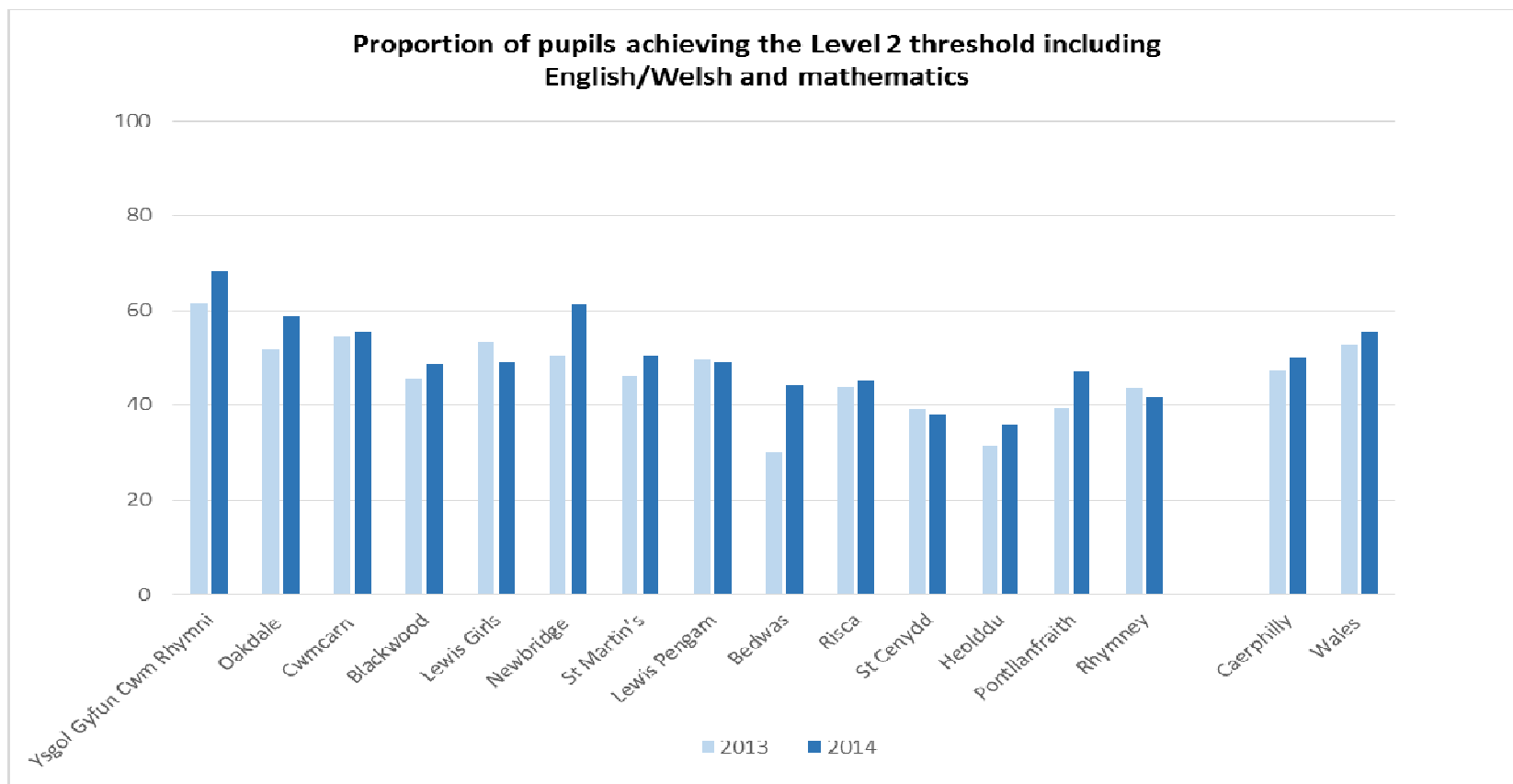
English A* G		
1	Monmouthshire	75.8
2	Fynfforde	70.3
3	Ceredigion	70.7
4	Wale of Glamorgan	70.9
5	POWIS	69
6	Cardiffshire	69.3
7	Gwynedd	69.2
8	Newport	69.2
9	Swansea	67.2
10	Denbighshire	66.6
11	Brockton	66.6
12	Wales	66.2
13	Perthshire	66.0
14	Cardiff	66.0
15	Conwy	63.6
16	Anglesey	63.2
17	Torfaen	64.7
18	Neath Port Talbot	60.7
19	Lleryd	61.6
20	Rhondda Cynon Taf	61.6
21	Merthyr Tydfil	59.3
22	Blaenau Gwent	54.7

Mathematics A* G		
1	Monmouthshire	70.8
2	Fynfforde	66.4
3	Ceredigion	66.0
4	Wale of Glamorgan	66.0
5	POWIS	65.7
6	Swansea	65.4
7	Gwynedd	63.2
8	Cardiffshire	64.7
9	Neath Port Talbot	63.6
10	Conwy	63.0
11	Denbighshire	62.6
12	Brockton	62.6
13	Wales	61.7
14	Torfaen	59.7
15	Cardiff	59.2
16	Perthshire	58.9
17	Lleryd	57.3
18	Rhondda Cynon Taf	56.6
19	Caerphilly	56.5
20	Newport	56.4
21	Merthyr Tydfil	55.6
22	Blaenau Gwent	48.2

Science Level 2		
1	Gwynedd	93.6
2	Torfaen	91.4
3	Brockton	89.4
4	Anglesey	88.2
5	Denbighshire	88.2
6	Wale of Glamorgan	87.4
7	Newport	86.5
8	Rhondda Cynon Taf	86.4
9	Conwy	86.4
10	Neath Port Talbot	84.9
11	Fynfforde	84.0
12	Swansea	82.0
13	Wales	82.0
14	Ceredigion	82.0
15	Perthshire	80.7
16	POWIS	79.9
17	Caerphilly	79.6
18	Cardiffshire	79.6
19	Lleryd	78.9
20	Cardiff	77.7
21	Blaenau Gwent	74.8
22	Monmouthshire	74.4

Key Stage 4 – Individual Schools

- Improvement across Caerphilly masks variation between schools
- 10 secondary schools improved performance in the Level 2 threshold inclusive of English/Welsh first language and mathematics, but performance declined in 4 schools.



Key Stage 4 - Individual School Performance



	Level 2 Threshold inc E.W & Maths (%)		CSI (%)		Level 2 (%)		Level 1 (%)		Capped Points Score	
	2013	2014	2013	2014	2013	2014	2013	2014	2013	2014
Ysgol Gyfun Cwm Rhymni	61.5	68.4	61	67.5	93	90.2	98.1	97.4	374.8	370.1
St Martin's	46.1	50.3	41.7	42.5	58.9	58.0	93.3	93.9	309.8	309.0
St Cenydd	39	37.9	33.9	34.7	60.5	71.1	91.8	93.2	309.1	319.4
Risca	43.9	45.1	42.1	35.4	72.8	80.5	97.4	97.6	329.9	339.0
Rhymney	43.7	41.5	27.9	37.7	66.5	59.1	93.7	95.0	295.2	301.1
Pontllanfraith	39.2	47.1	26.4	47.1	50.4	53.8	85.6	80.8	272.5	270.9
Oakdale	51.9	58.7	51.9	58.7	86.8	86.2	93.8	91.7	338.2	319.0
Newbridge	50.3	61.1	50.3	60.6	78.4	90.0	95.3	96.7	337.7	363.3
Lewis Pengam	49.5	49.0	48.4	47.7	81.9	88.7	90.7	93.4	329.2	332.8
Lewis Girls	53.2	49.0	51.5	49.0	71.7	81.0	93.1	96.1	340.4	350.2
Heolddu	31.5	35.9	31.5	35.9	60.5	66.9	90.3	95.1	297.4	313.8
Cwmcarn	54.6	55.4	47.2	54.7	72.4	71.2	95.7	98.6	324.1	322.8
Blackwood	45.7	48.8	45.2	48.3	57.9	68.2	91.9	96.5	310.2	332.5
Bedwas	29.9	44.1	27.9	38.1	52.4	69.5	85.7	81.4	279	296.5
Caerphilly	47.2	50.0	42.6	47.8	69.1	74.1	92.4	93.6	319	326.3
Wales	52.7	55.4	49.2	52.6	77.8	82.3	93.2	94.00	333	340.8

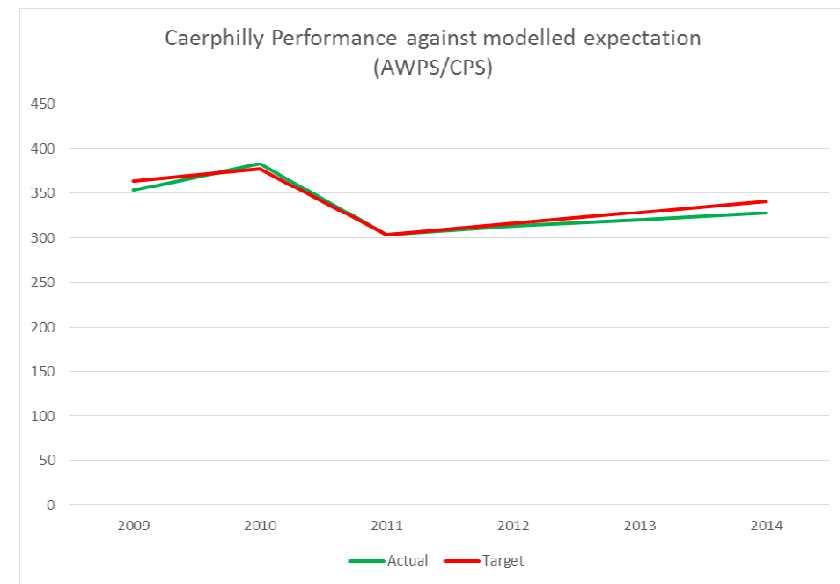
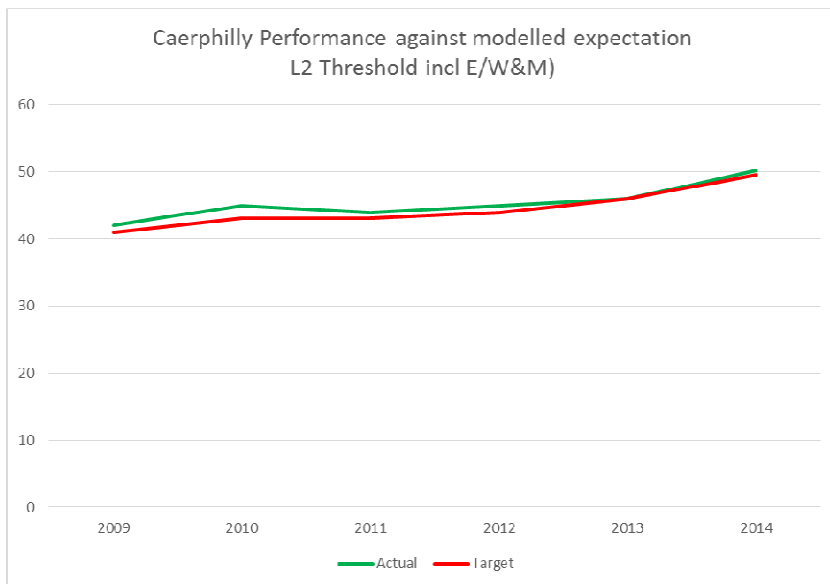
Key Stage 4 – Benchmark Summary



Key Stage 4 – Against Modelled Expectation



		2009	2010	2011	2012	2013	2014
Level 2 threshold including English/Welsh and maths	Actual	42	45	44	45	46	50.2
	Target	41	43	43	44	46	49.5
Average Wider Point Score (AWPS) up to 2009-10 / Capped Average Wider Point Score (CPS) 2011-14	Actual	353	383	304	313	320	328
	Target	364	377	304	316	329	341



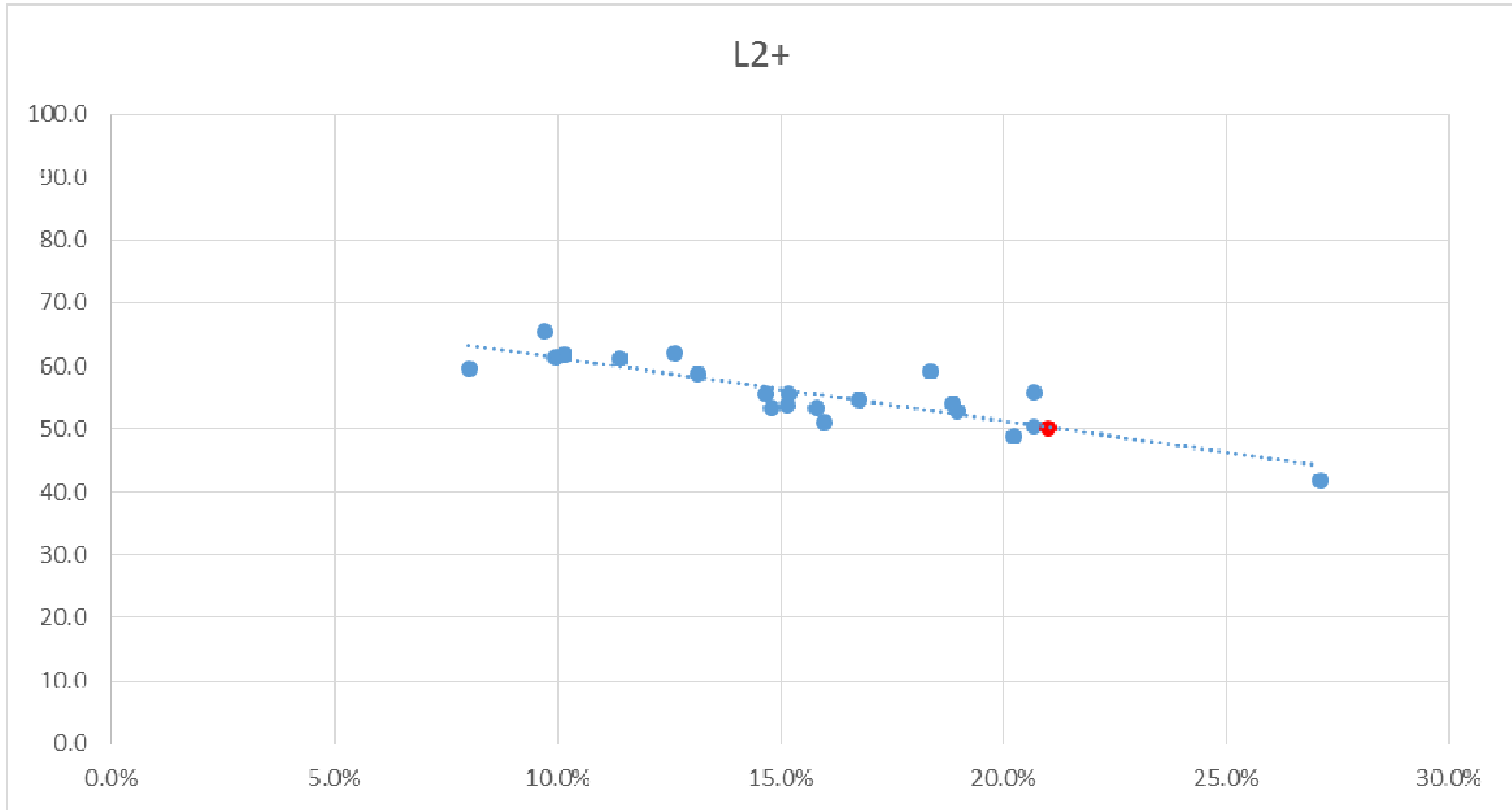
L2 Threshold Including E/W&M – LA Comparison



Rank	LA	FSM	L2+
1	Monmouthshire	9.7%	65.6
2	Vale of Glamorgan	12.6%	62.2
3	Flintshire	10.2%	61.9
4	Ceredigion	10.0%	61.4
5	Gwynedd	11.4%	61.1
6	Powys	8.0%	59.6
7	Swansea	18.4%	59.1
8	Carmarthenshire	13.1%	58.7
9	Neath Port Talbot	20.7%	55.8
10	Denbighshire	15.2%	55.6
11	Conwy	14.7%	55.5
12	Bridgend	16.8%	54.8
13	Cardiff	18.9%	54.0
14	Isle of Anglesey	15.1%	53.8
15	Torfaen	15.8%	53.4
16	Pembrokeshire	14.8%	53.2
17	Newport	19.0%	52.8
18	Wrexham	16.0%	51.0
19	Rhondda,Cynon,Taf	20.7%	50.5
20	Caerphilly	21.0%	50.0
21	Merthyr Tydfil	20.2%	48.9
22	Blaenau Gwent	27.1%	41.8

Less than 5%
between
20th and 12th

L2 Threshold Including E/W&M – LA Comparison



Capped Point Score– LA Comparison



Rank	LA	FSM	CPS
1	Gwynedd	11.4%	362
2	Ceredigion	10.0%	360
3	Isle of Anglesey	15.1%	357
4	Carmarthenshire	13.1%	352
5	Denbighshire	15.2%	352
6	Powys	8.0%	352
7	Neath Port Talbot	20.7%	351
8	Monmouthshire	9.7%	351
9	Vale of Glamorgan	12.6%	350
10	Swansea	18.4%	350
11	Conwy	14.7%	346
12	Pembrokeshire	14.8%	344
13	Flintshire	10.2%	341
14	Merthyr Tydfil	20.2%	340
15	Newport	19.0%	340
16	Torfaen	15.8%	338
17	Rhondda,Cynon,Taf	20.7%	336
18	Bridgend	16.8%	334
19	Cardiff	18.9%	331
20	Wrexham	16.0%	329
21	Caerphilly	21.0%	326
22	Blaenau Gwent	27.1%	316

Less than 15 points
between
21st and 14th

Capped Point Score – LA Comparison

